



be certain

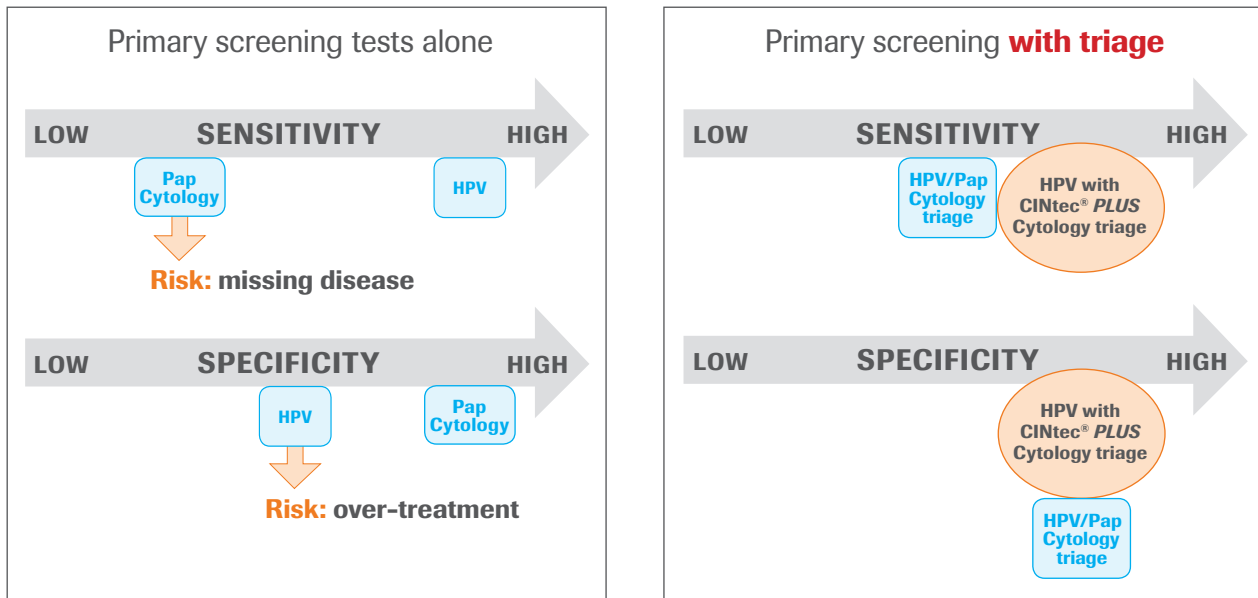
SCREEN — TRIAGE — DIAGNOSE

The science that creates certainty.

CINtec[®] PLUS
CYTOLOGY

Morphology based diagnosis with Pap cytology is subject to interpretive variability and lacks diagnostic accuracy

HPV DNA testing is the most sensitive screening method, but diagnostic accuracy improves with *triage testing* of HPV+ test results


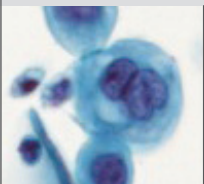


Wright TC Jr, et al. *Gynecol Oncol.* 2017;144(1):51-6; Gustinucci D. et al. *Am J Clin Path.* 2016;145(1):35-45.

Using objective biomarkers to triage can help alleviate diagnostic uncertainty

The CINtec® PLUS Cytology test uses two objective biomarkers to answer the question: Are oncogenically transformed cells present in the HPV positive woman?

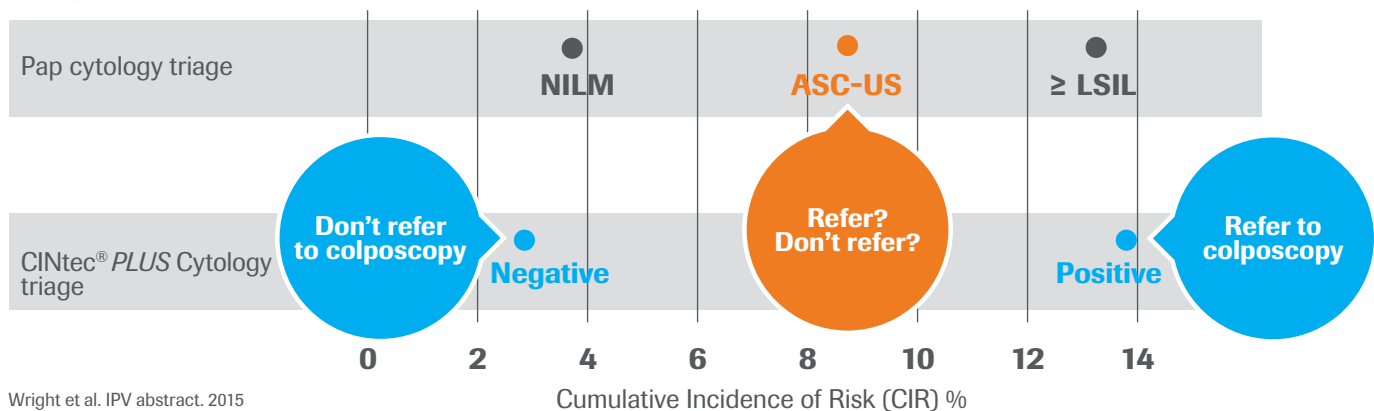
In healthy cells, p16 and Ki-67 expression is mutually exclusive

CINtec® PLUS Cytology	Pap Cytology
 <p>Simultaneous expression of p16 and Ki-67 in the same cell indicates cellular oncogenic transformation.</p>	 <p>No objective biomarkers are present. Results rely on subjective interpretation of cellular morphology only.</p>
Objective Result	Subjective Interpretation

Roche mtm laboratories AG. 2009; Scholzen T and Gerdes J. *J. Cell Physiol.* 2000; 182(3):311-22; Klaes et al. *Int J Cancer.* 2001;92(2): 276-84.

CINtec® PLUS Cytology test gives a simple, objective answer

Risk of 12 other hrHPV (+) women to develop CIN3+ in 3 years

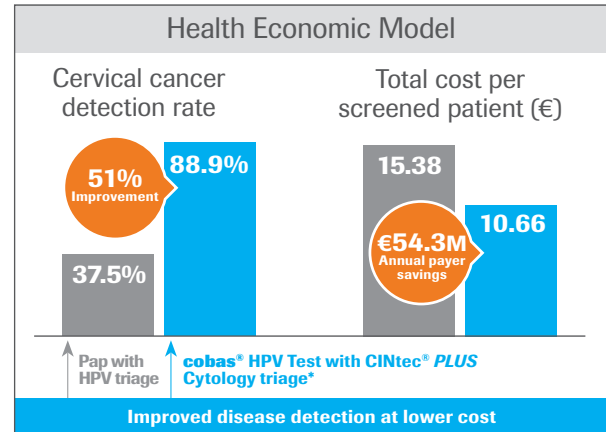
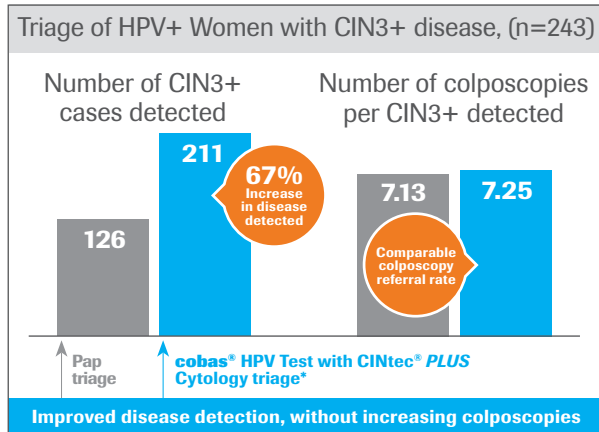


Wright et al. IPV abstract. 2015

Cumulative Incidence of Risk (CIR) %

cobas® HPV Test with CINtec® PLUS Cytology triage could lead to improved clinical outcomes

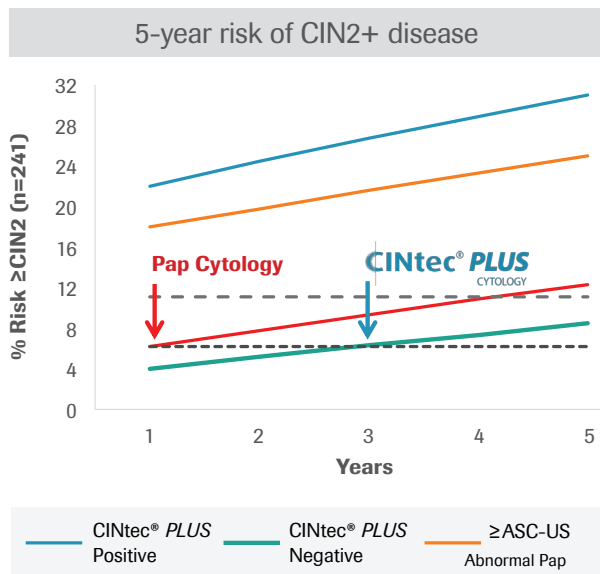
- Clinicians use screening and triage test to identify the risk of disease and can manage women based on their level of risk.
- Various combinations of screening and triage tests can result in differences in disease detection and the number of colposcopies required.
- A strategy that results in more disease detection without increasing the colposcopy rate can aid clinicians making decisions that result in improved clinical outcomes and lower healthcare costs.



Wright TC Jr, et al. *Gynecol Oncol.* 2017;144(1):51-6; Petry KU. *Eur J Obstet Gynecol Reprod Biol.* 2017.212:132-9.
 *cobas® HPV 16/18 genotyping and CINtec® PLUS Cytology triage of 12 other hrHPV women

Triage with CINtec® PLUS Cytology provides greater assurance of safety

Improved risk stratification and retest threshold of HPV+ women




- Benefits of CINtec® PLUS Cytology
- » Greater disease detection
 - » Safety assurance of a negative result: Never exceeded colposcopy referral threshold
 - » The authors suggest safe extension of the testing interval: CINtec® PLUS Cytology (3 years) versus Pap Cytology (1 year)

NCI, National Cancer Institute; KPNC, Kaiser Permanente Northern California
 Clarke MA, et al. *JAMA Oncology.* 2019;5(2):181-6

CINtec® PLUS Cytology:

- Gives physicians simple, actionable results to be more confident in patient management
- Increases the efficiency of disease detection in the first round of screening
- Provides women with clear answers and more certainty in their test results



CINtec® PLUS Cytology, part of The Roche Cervical Cancer Portfolio. Find the focus you need to make decisions for each of your patients with confidence, certainty and conclusiveness. Using Roche's three clinically validated tests in powerful combination helps stratify women at risk and improves detection and confirmation of high-grade disease in the first round of testing.



be confident

Screen with **cobas® HPV**, the only FDA-approved and CE-IVD marked test for first-line primary screening in both major collection media. **cobas® HPV** delivers 3-in-1 results with detection of 14 hrHPV genotypes and simultaneous, individual results for HPV 16 and HPV 18 for actionable patient management.



be certain

Triage with **CINtec® PLUS Cytology**, the only test that uses dual-biomarker technology to simultaneously detect p16 and Ki-67 to provide a strong indicator of the presence of transforming HPV infection.



be conclusive

Diagnose with **CINtec® Histology** – Enhances identification of occult lesions that may be missed by H&E or morphologic interpretation alone.

Learn more about CINtec® PLUS Cytology by contacting your local Roche representative.